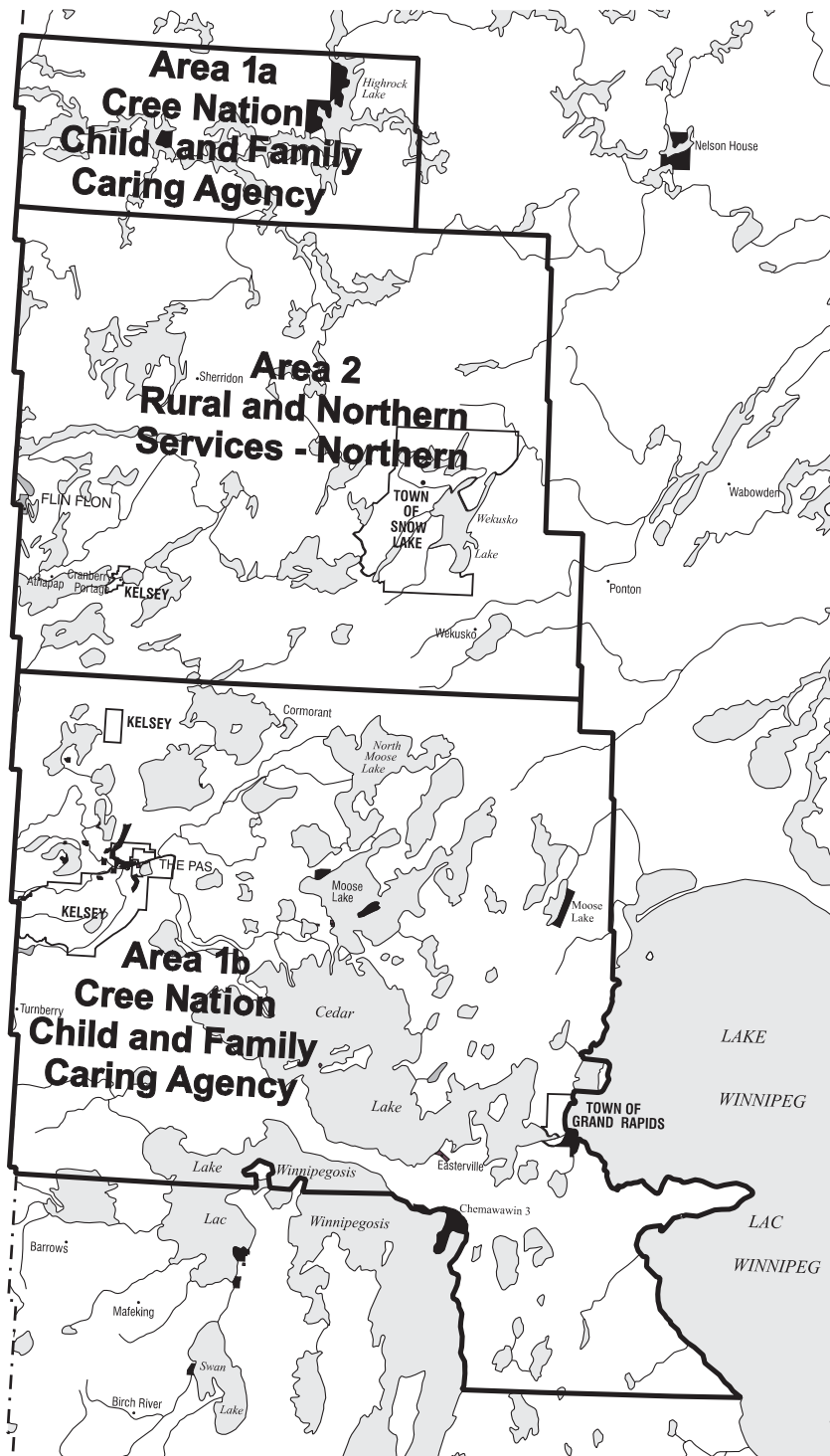


# Introducing New Intake and After-Hours Arrangements for Child and Family Services



Effective October 18, 2004, new arrangements for intake and emergency after-hours services are being introduced in all off-reserve areas in the Norman region.

If you need intake or emergency after-hours services on or after that date, please call the agency in your area (see map):

**Area 1a and 1b:  
Cree Nation Child and Family Caring Agency  
(204) 623-7456**

**Area 2:  
Rural and Northern Services - Northern  
(204) 687-1700**

Or call the province-wide intake and emergency after-hours child and family services telephone number: **1-866-345-9241.**



MANITOBA  
MÉTIS  
FEDERATION



ASSEMBLY OF  
MANITOBA  
CHIEFS



MANITOBA  
KEEWATINOWIN  
ININEEW OKIMOWIN

Manitoba 